

eckerle



**CONDENSATE
WATER PUMPS**

SWISS  MADE

eckerle

Gotec has over 60 years' experience in the development and production of solenoid pumps. This technology has been used in our condensate pumps since 1998. Our product also integrates electronic components that are produced in Germany by our sister company. We are the only manufacturer in the world to offer you products that are 100% manufactured in-house. Quiet, reliable, high-performance products.

Certifications



SWISS  MADE

COOLING CAPACITY



TATTOO 5/10/16

TATTOO 5 · 12'000BTU
TATTOO 10 · 24'000BTU
TATTOO 16 · 48'000BTU



FREEZY

FREEZY · 54'000BTU



TOUCHLINE

TOUCHLINE · 24'000BTU



RAPIDO KIT

RAPIDO KIT · 24'000BTU



RAPIDO 8

RAPIDO 8 · 24'000BTU



FW45

FW45 · 120'000BTU



EE300

EE300 · 24'000BTU



EE400NEO

EE400NEO · 24'000BTU

Max. cooling capacity with ambient humidity of maximal 45%. If > 45%, choose another system with more cooling capacity.

SWISS  MADE

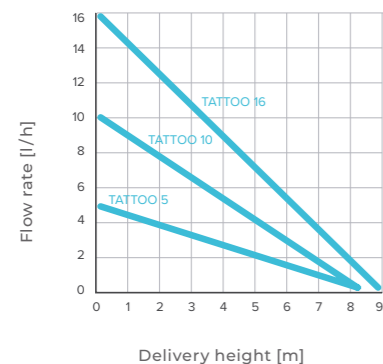
TATTOO 5/10/16

DESCRIPTION

The most silent condensate removal system on the market
(according to the test report of the Laboratory LNE laboratories in Paris). With plenty of accessories (multi-position mounting plate, 90° elbow to connect the drain pan to the detection unit, Built-in check valve in the pump).



PERFORMANCES



TATTOO 5 TECHNICAL INFORMATION

Sound level	16.4 dB@1m
Max. flow rate	5 l/h (1.3 gal/h)
Max. dry suction height	1 m (3.3 ft)
Max. wet suction height	2 m (6.6 ft)
Max. delivery height (see diagram)	8 m (26.2 ft)
Alarm contact	NO/NC 8A 230V
Dimensions: pump unit	150x54x28mm (5.9x2.1x1.1in)
detection unit	82x39x39mm (3.2x1.5x1.5in)

For air conditioners up to 12'000Btu (cooling capacity)

TATTOO 10 TECHNICAL INFORMATION

Sound level	16.4 dB@1m
Max. flow rate	10 l/h (2.6 gal/h)
Max. dry suction height	1 m(3.3 ft)
Max. wet suction height	2 m (6.6 ft)
Max. delivery height (see diagram)	8 m (26.2 ft)
Alarm contact	NO/NC 8A 230V
Dimensions: pump unit	150x54x28mm (5.9x2.1x1.1in)
detection unit	82x39x39mm (3.2x1.5x1.5in)

For air conditioners up to 24'000Btu (cooling capacity)

TATTOO 16 TECHNICAL INFORMATION

Sound level	≤ 20 dB@1m
Max. flow rate	16 l/h (4.2 gal/h)
Max. dry suction height	1 m (3.3 ft)
Max. wet suction height	2 m (6.6 ft)
Max. delivery height (see diagram)	9 m (29.5 ft)
Alarm contact	NO/NC 8A 230V
Dimensions: pump unit	150x54x28mm (5.9x2.1x1.1in)
detection unit	82x39x39mm (3.2x1.5x1.5in)

For air conditioners up to 48'000Btu (cooling capacity)

FREEZY



DESCRIPTION

New pump which can be installed directly underneath the minisplit, on the right or on the left side. This pump is embellished with an innovative new detection system, which detects condensate water. Very easy assembly and maintenance. The pump is also "dual voltage", it can be powered in 115V and 230V.

ADVANTAGES

- Super silent pump
- Installation on the right side or on the left side (reversible)
- Easy to install (only 2 elements): mounting plate (with pump and detection system) and cover
- Easy to service: the cover acts as a reservoir
- Dual Voltage: can be supplied with 115V and 230V
- Thermal overload protection 100°C (212°F)

TECHNICAL INFORMATION

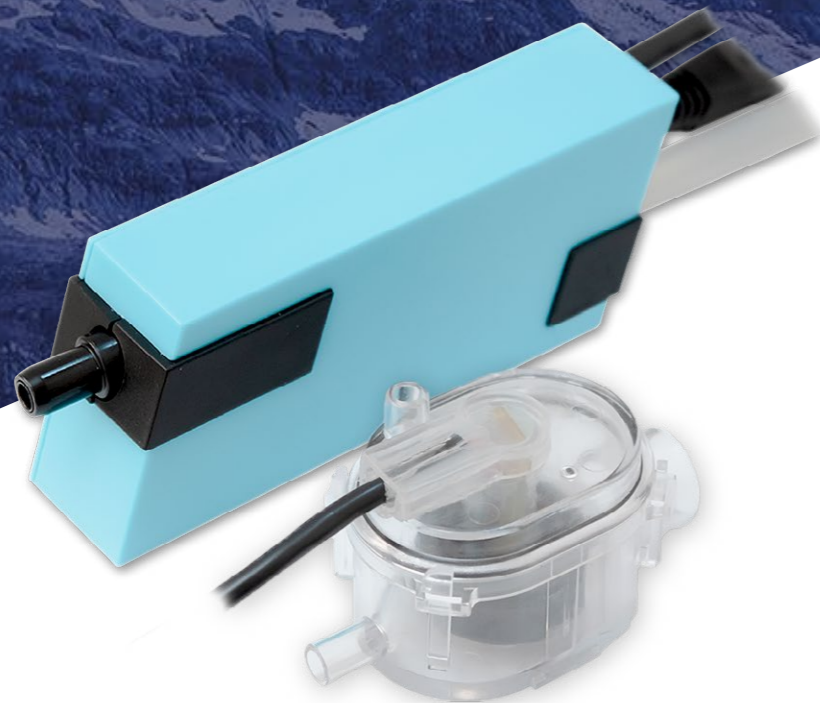
Sound level	≤ 21 dB@1m
Max. flow rate	20 l/h (5.3 gal/h)
Max. dry suction height	1 m (3.3 ft)
Max. wet suction height	2 m (6.6 ft)
Max. delivery height (see diagram)	10 m (32.8 ft)
Alarm contact	NO/NC 8A 230V
Dimensions: pump unit	50x63x258mm (1.9x2.4x10.1in)

For air conditioners up to 54'000Btu (cooling capacity)

PERFORMANCES



TOUCHLINE



DESCRIPTION

New economical condensate pump with all the accessories of a PREMIUM pump. It replaces the GO10. Thanks to the same anti-vibration technology used for the TATTOO, the pump is extremely quiet.

ADVANTAGES

- Economical and reliable
- Thermal overload protection 120°C (248°F)
- Silent
- Anti-overflow alarm contact NO/NC
- Full of accessories

TECHNICAL INFORMATION

Sound level	≤ 19 dB@1m
Max. delivery height (see diagram)	10 l/h (2.6 gal/h)
Max. dry suction height	1 m (3.3 ft)
Max. wet suction height	2 m (6.6 ft)
Max. delivery height (see diagram)	8 m (26.2 ft)
Alarm contact	NO/NC 8A 230V
Dimensions: pump unit	78x36x65mm (3x1.4x2.5in)
detection unit	72x39x39mm (2.85x1.5x1.5in)

For air conditioners up to 24'000Btu (cooling capacity)

PERFORMANCES



RAPIDO KIT



THE SYSTEM " MORE "

- + space for refrigerant tubes
- + quick to bend tubes, thanks to a larger angle tube
- + compact, designed for 80 mm wide of duct
- + easy for maintenance, **thanks to separated detection**
- + reliable because it's based on the experience of more than 60 years in the field of electromagnetic pump
- + silent (pump <20dB@1m) thanks to the special isolation noise-reducing that covers the most of part of duct angle (gain of 2 to 5dBA compared to the similar system)
- + aesthetics thanks to respect the line of producer's duct



DESCRIPTION

The complete system for fast, reliable installation. An elbow to fit the pump, developed in collaboration between Gotec and Artiplastic, with anti-vibration foams developed exclusively for our silent pump.

TECHNICAL INFORMATION

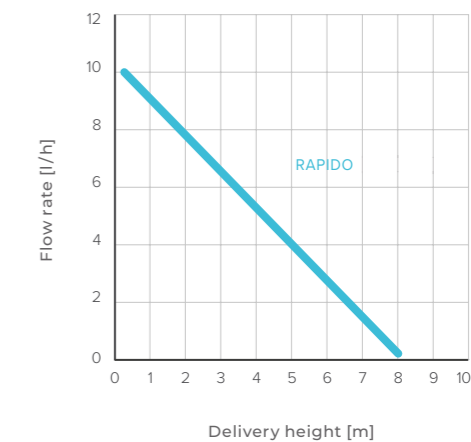
Sound level	≤ 20 dB@1m
Max. flow rate	10 l/h (2.6 gal/h)
Max. dry suction height	1 m (3.3 ft)
Max. wet suction height	2 m (6.6 ft)
Max. delivery height (see diagram)	8 m (26.2 ft)
Alarm contact	NO/NC 8A 230V
Dimensions: pump unit	78x36x65mm (3x1.4x2.5in)
detection unit	82x39x39mm (3.2x1.5x1.5in)

For air conditioners up to 24'000Btu (cooling capacity)

ADVANTAGES

The complete kit (condensate removal system and duct) is for quick installation. The best offer of the market for this type of system.

PERFORMANCES



RAPIDO8



DESCRIPTION

The Rapido 8 is the pump used in the RAPIDO kit. It is very popular with installers because it is compact and quiet.

ADVANTAGES

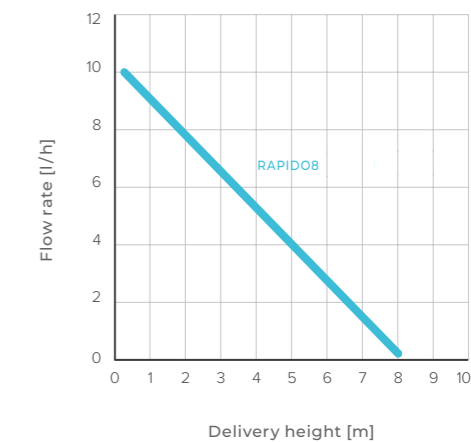
- Compact and silent
- Thermal overload protection 120°C (248°F)
- Full of accessories

TECHNICAL INFORMATION

Sound level	≤ 19 dB@1m
Max. flow rate	10 l/h (2.6 gal/h)
Max. dry suction height	1 m (3.3 ft)
Max. wet suction height	2 m (6.6 ft)
Max. delivery height (see diagram)	8 m (26.2 ft)
Alarm contact	NO/NC 8A 230V
Dimensions: pump unit	78x36x65mm (3x1.4x2.5in)
detection unit	82x39x39mm (3.2x1.5x1.5in)

For air conditioners up to 24'000Btu (cooling capacity)

PERFORMANCES



FW45



DESCRIPTION

Condensate removal system foreseen for air-conditioning units up to 120'000Btu (cooling capacity). Very low sound level compared to the high performance. Housing ribs to ventilate the electromagnetic piston pump which insures a long lifetime.

ADVANTAGES

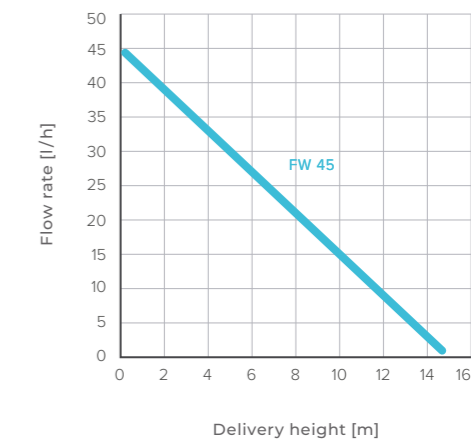
- Very compact but also powerful (120'000Btu)
- Thermal overload protection 120°C (248°F)
- Anti-overflow alarm contact
- Built-in check valve

TECHNICAL INFORMATION

Sound level	23 dB@1m
Max. flow rate	45 l/h (11.9 gal/h)
Max. dry suction height	1 m (3.3 ft)
Max. wet suction height	2 m (6.6 ft)
Max. delivery height (see diagram)	15 m (49.2 ft)
Alarm contact	NO/NC 8A 230V
Dimensions: pump unit	103x96x67mm (4x3.8x2.6 in)
detection unit	82x39x39mm (3.2x1.5x1.5in)

For air conditioners up to 120'000Btu (cooling capacity)

PERFORMANCES



EE300



DESCRIPTION

The EE300 condensate pump is designed for the transport of condensate from air conditioning systems, refrigeration counters, dehumidifiers and gas condensing boilers. The housing is made from impact-stable ABS and is chemically resistant to the acidic condensate from condensing boiler systems.

ADVANTAGES

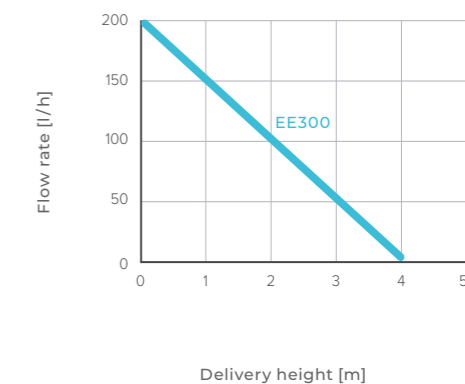
- Low-noise centrifugal pump with 1.5-metre-long mains cable
- Integrated non-return valve prevents the backflow of condensate into the container
- Compact construction
- Attractive design
- Stylish wall cladding

TECHNICAL INFORMATION

Sound Level	≤ 30 dB@1m
Max. flow rate	200 l/h (52.8 gal/h)
Max. delivery height (see diagram)	4 m (13.1ft)
Alarm contact	NC 3A 230V
Dimensions: pump unit	200x110x145mm (7.9x4.3x5.7in)
6-wire cable (alarm + voltage) with anti-tamper protection	

For air conditioners up to 24'000Btu

PERFORMANCES



EE400NEO



DESCRIPTION

The centrifugal pump EE400NEO (tank pump) is specially designed for the evacuation of condensate water by air conditioners, fan coils, evaporators, refrigerated display cases, etc. ABS case is highly resistant and its construction "zero corrosion" is a guarantee of quality and longevity. The motor unit can be separated from the case and immersed in a condensation drain pan (Max. pan height 70mm).

ADVANTAGES

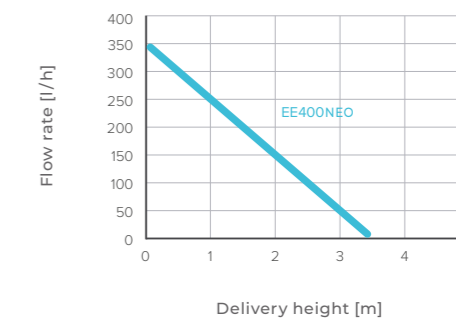
- Extremely silent pump
- Delivered with a 1.5m power cord
- Ball bearing drive shaft
- Check valve to prevent back-flow of liquid into the pump
- Alarm contact against overflow
- The most compact and silent system on the market

TECHNICAL INFORMATION

Sound level	≤ 42 dB@1m
Max. flow rate	350 l/h (90.4 gal/h)
Max. delivery height (see diagram)	3.5 m (9.8ft)
Alarm contact	NO/NC 8A 230V
Dimensions: pump unit	185x85x100mm (7.3x3.3x3.9in)

For air conditioners up to 24'000Btu (cooling capacity)

PERFORMANCES



ACCESSORIES

A large choice of accessories for our condensate removal system



CHECK VALVE

FOR TUBE INTERNAL
DIAMETER 6MM



ADAPTOR KIT WITH 2 O-RINGS

Ø 17/32 · 100 PIECES



ADAPTOR KIT

Ø 17/22 · 100 PIECES
Ø 20/22 · 100 PIECES



ADAPTOR KIT

Ø 17/32 · 100 PIECES
Ø 20/32 · 100 PIECES



FLOAT DETECTION UNIT

WITH 90MM CABLE (FOR RAPIDO KIT)
WITH 1.5M CABLE



90° ELBOW

TO CONNECT THE DETECTION
UNIT TO THE DRAIN PAN



eckerle

SWISS  MADE

SWISS  MADE



eckerle

GOTEC SA
Route de Mangold 11
CH - 1958 St-Léonard

📞 Tél. +41 (0)27 205 7 205

✉ info@gotec.ch
www.gotec.ch

SWISS  MADE