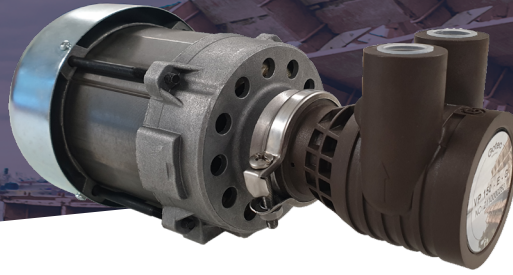




## ROTARY VANE PUMP

# VP150+MOTOR

 TECHNICAL  
DATA


## DATA FOR PUMP - VP150

Flow rate at 9 bar (at 1'450 rpm)	≥ 150l/h
Max. pressure	≥ 12 bar
Pump housing	PPS
Hydraulic connectors	G 3/8" NPT 3/8" (on request)
Rotor	Stainless steel
Bearings & vanes	Graphite
Sealings	EPDM Viton (on request)
Overpressure security	Bypass valve
Motor mounting	Clamping collar, coupling and integrated flange
Mounting plate	Upon request
Weight	4kg
Fluid temperature	1...70[°C]

## DESCRIPTION

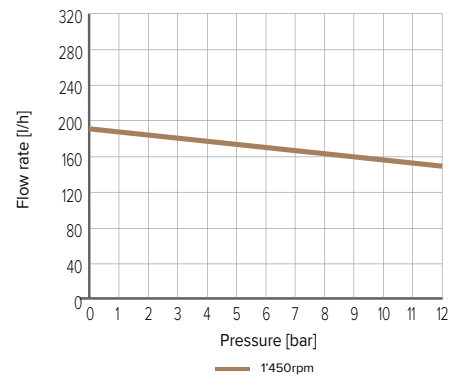
The complete system is compact in size, so it can be integrated into any machine. Its body made from fibreglass-reinforced PPS, graphite for the bearings and blades and vanes, and stainless steel for the rotor, ensure high durability and allow the pump to be used with a wide variety of liquids. The built-in, adjustable overload valve protects the pump from temporary excess pressure. The coupling has been specially designed to absorb vibrations and reduce noise levels.

The pump is NSF169 (EPDM) certified.

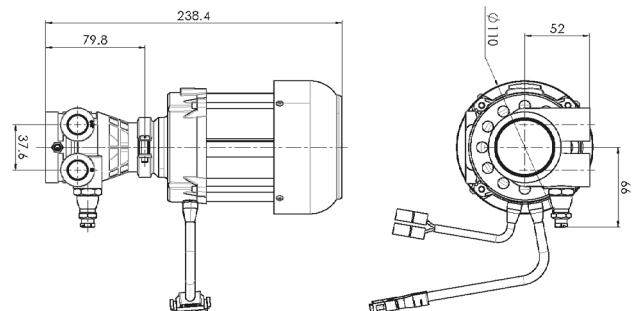
## DATA FOR MOTOR

Motor type	230V 50/60Hz Single-phase
Power	120 W
Poles	4
Speed	1'450rpm
Insulation Class	F
Protection IP	IP20
Thermal security	150°C

## PERFORMANCES



## DIMENSIONS



Please refer to instruction manual for more installation details.

For more information, visit our website :

[www.gotec.ch](http://www.gotec.ch)

Certifications



Route de Mangold 11  
CH - 1958 St-Léonard



Tél. +41 (0)27 205 72 05



[info@gotec.ch](mailto:info@gotec.ch)  
[www.gotec.ch](http://www.gotec.ch)

SWISS MADE